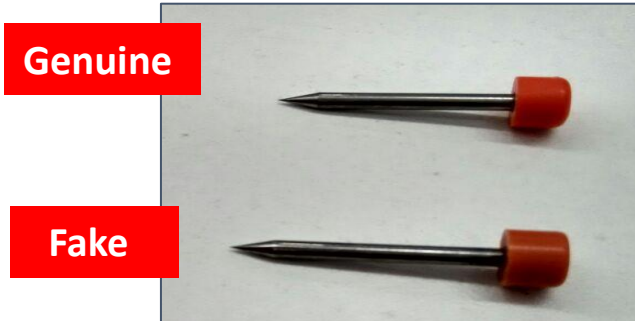


Electrodes: Differentiate genuine goods from fake/counterfeit goods



Difference in Size:

Genuine Electrode Size= 24 mm
Fake Electrode Size = 25mm

Difference in color:

Genuine Electrode Color= Dark Orange
Fake Electrode Color = Light Orange

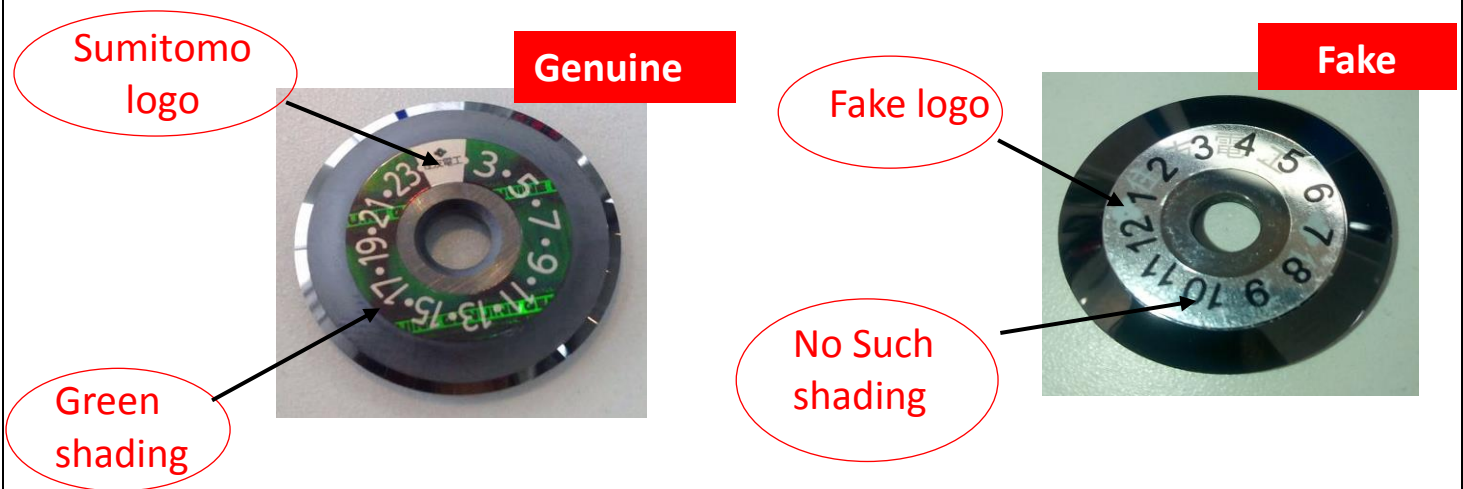
Difference in hole at back End:

Genuine Electrode hole=Narrow
Fake Electrode hole=Wide

RISKS OF USING FAKE/COUNTERFEIT ELECTRODE:

1. Number of Splicing's from fake products will be lesser.
2. Due to big hole on the head of the Electrode, **ARC** may get discharged on the Machine which may damage Machine part/s.
3. Due to the usage of Pirated Electrodes, useful life of Machine could get reduced.
4. Performance results after Splicing might not be reliable (higher splicing losses may occur).

Cleaver Blade: Differentiate genuine goods from fake/counterfeit goods



1.) **Sumitomo Logo:** Sumitomo Fake Logo (Trademark Infringement)

2.) **Difference in color Shading from top:**

Genuine Cleaver Blade Color shading= **Green color**

Fake Cleaver Blade Color shading = No such color

RISKS OF USING FAKE/COUNTERFEIT CLEAVER BLADE:

1.) Fiber cutting angle will not be good which will affect splicing results.

2.) Blade Life is much lesser compared to the genuine.

Cleaver: Differentiate genuine goods from fake/counterfeit goods

Original

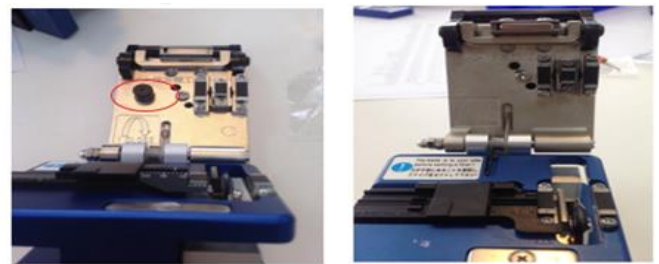
Fake



i. Difference in Name Plate

Original

Fake



ii. No Holder Clamp in fake product

Original

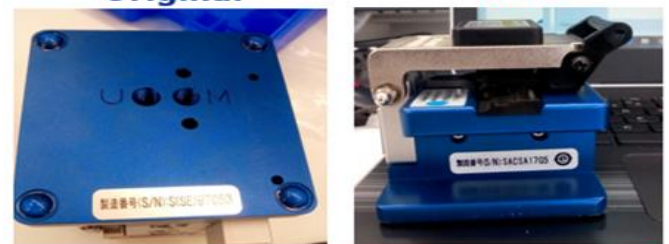
Fake



iii. Different Height Adjustment Screw

Original

Fake



iv. Sl. No. Identification at bottom(Original)
Sl. No. Identification at left side(Fake)

RISKS OF USING FAKE/COUNTERFEIT CLEAVER:

- 1.) Fiber cutting angle will not be good which will affect splicing results.
- 2.) Rubber pad life is much less as compared to original one.
- 3.) Blade height adjustment issue comes more frequently which affect cleaver performance.