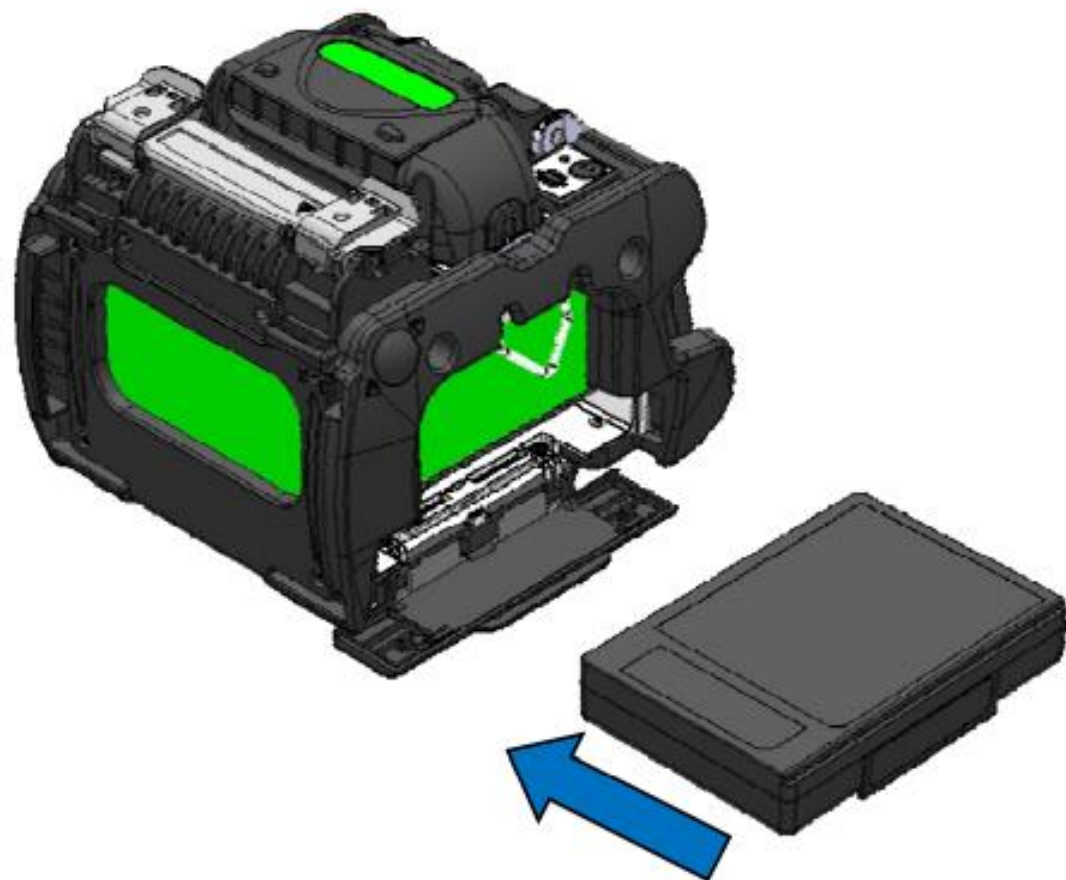


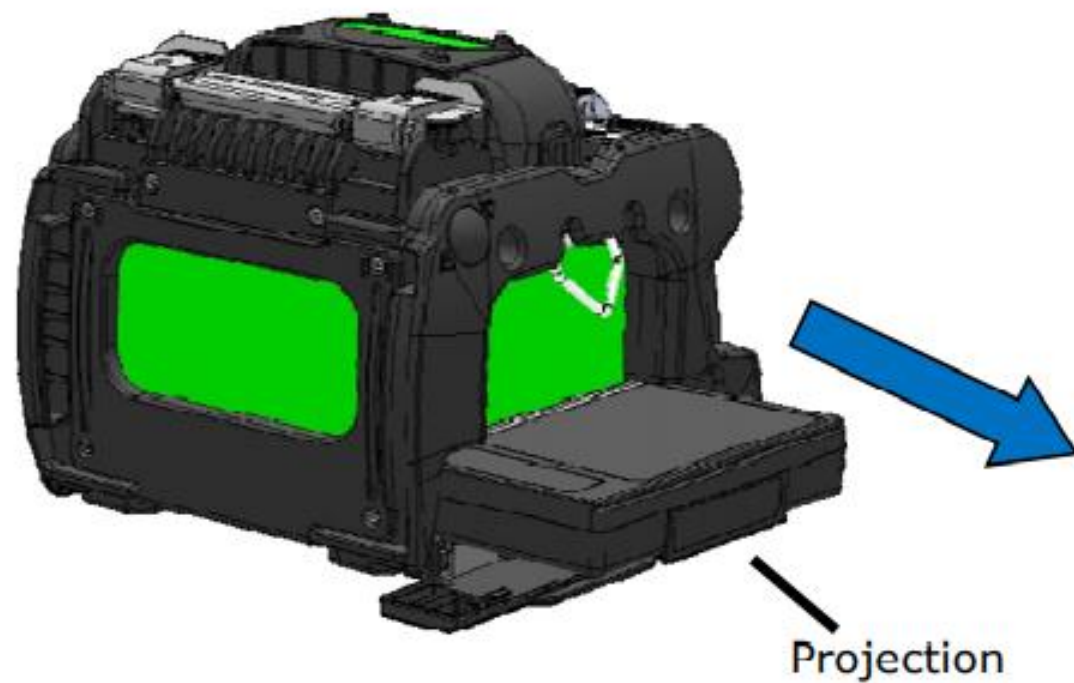
Battery pack installation

Insert the battery pack straight all the way in the slot.



Battery pack removal

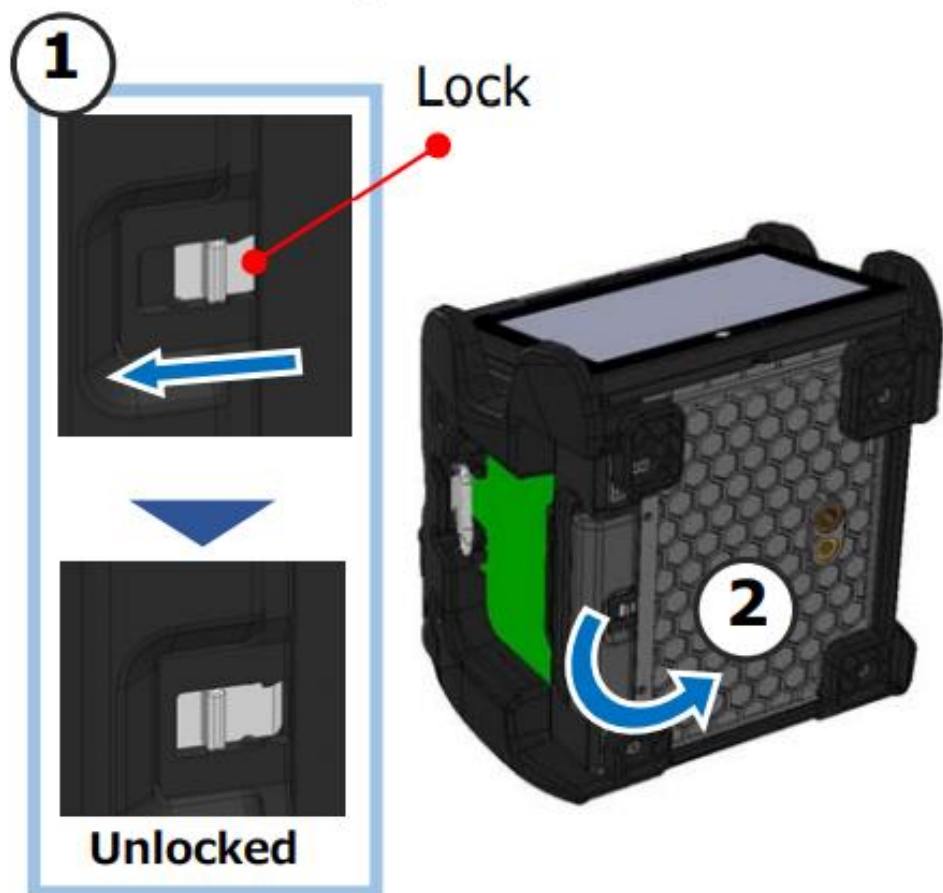
Open the cover of the slot. Hook your finger to the projection of the battery pack, and then slide it out in the direction of the arrow.



Opening and closing the cover of the battery pack slot

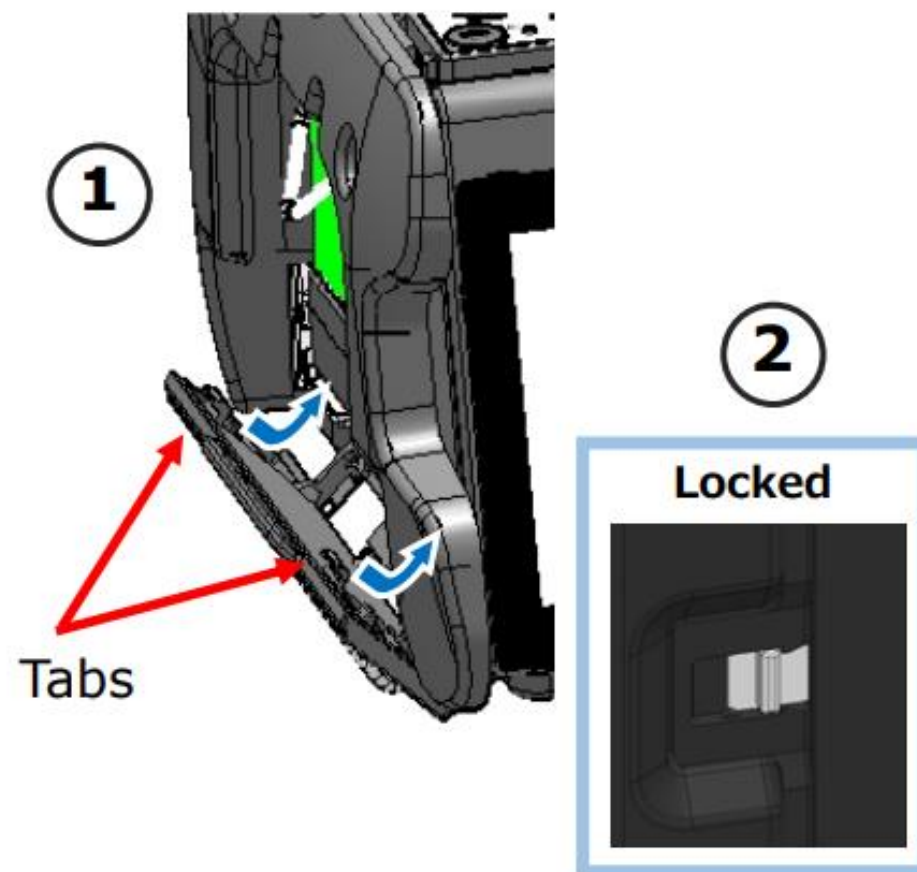
Open

- ① Slide the lock in the direction of the arrow to unlock the cover.
- ② Open the cover.



Close

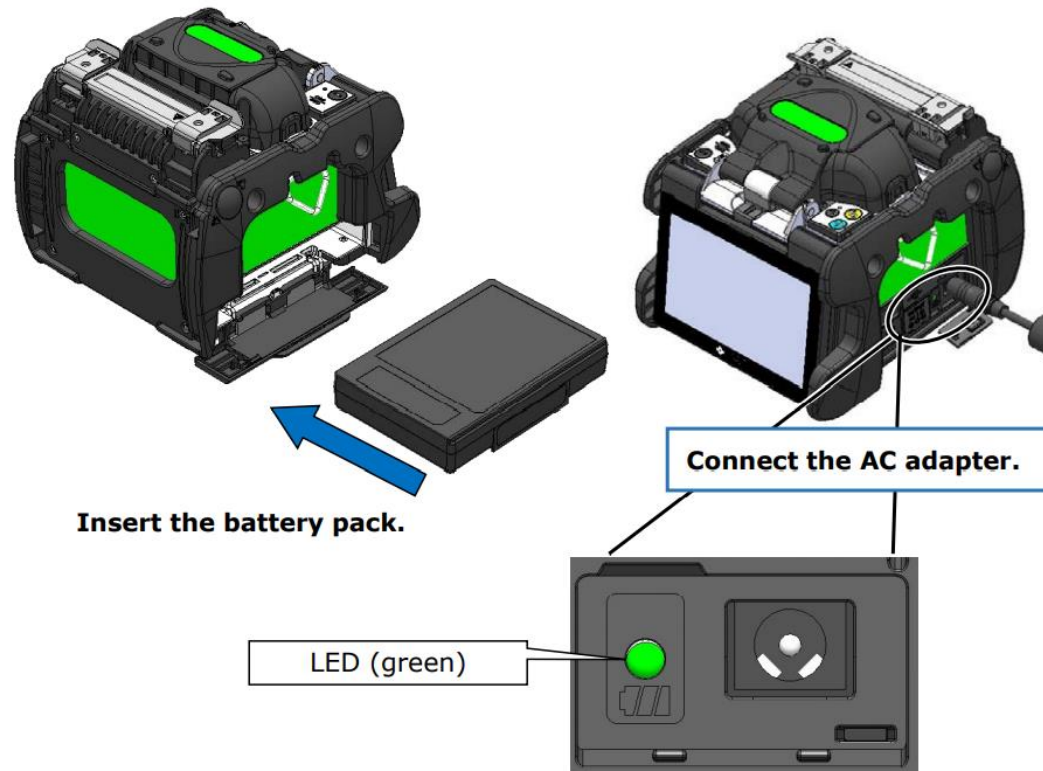
- ① Insert the tab of the cover into the slot. Close the cover.
- ② Lock the cover securely.



■ Battery charging

- **Before using the battery pack for the first time, charge the battery pack. (The battery is not fully charged before shipping.)**

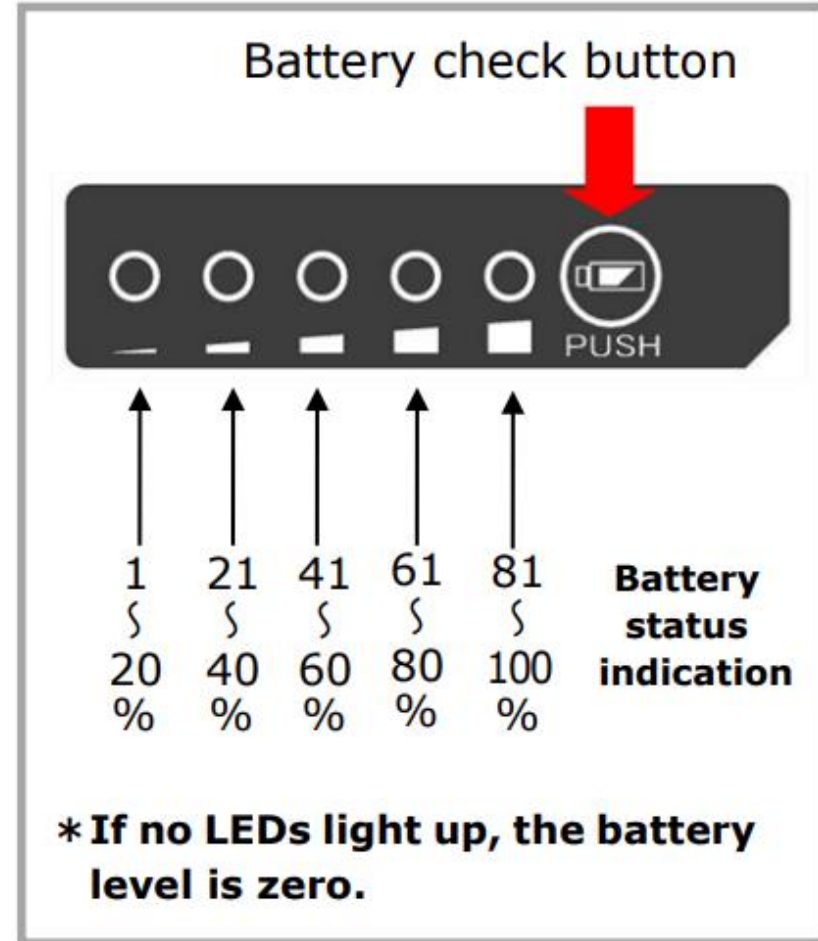
- 1: Insert the battery pack into the Z2C.
- 2: Connect the AC adapter to the Z2C.
- 3: The LED (green) next to the DC input terminal blinks and the charging is started.
- 4: It takes 4 hours to finish charging though the charging time differs according to the remaining battery capacity. The LED (green) illuminates when the charging completes.



■ Battery level check

- Check the battery level on the battery pack

Press the battery check button. The LED will light up for a few seconds to indicate the battery status in one of five levels.



- **Check the battery level on the monitor**

The battery level is also displayed as a battery level indicator on the monitor. Splice and heat cycles possible with remaining battery level is indicated when you tap the indicator.



*The possible cycle displayed on the monitor is estimated based on the remaining battery level. It changes according to the operational environment and condition. (No guaranteed value)

Status	Current battery level					
	0~5%	6~20%	21~40%	41~60%	61~80%	81~100%
Discharging						
Charging						

Be sure to charge the battery before use if the battery level is low.